

WYNCATCHER II

2150 NW MIAMI CT | WYNWOOD

MORABITO
PROPERTIES

Cameron Tallon
Senior Vice President
+1 407 284 7455
cameron.tallon@cbre.com
777 Brickell Ave.
Suite 1100 Miami, FL 33131

Randy Carballo
+1 305 299 9163
randy.carballo@cbre.com

CBRE

Wyncatcher II

Wyncatcher II at 2150 NW Miami Court is a one of a kind unique creative space in the world-renowned Wynwood district in Miami. This unique property pays homage to the heritage of this unique neighborhood combining its industrial look with the comfort and modernity of new construction.

The complex will be composed of a covered parking, a ground floor and second floor with double corner exposure, a private garden, and a rooftop.

Through its large full height white frame windows, high ceilings, and natural light, this space is conducive to an open for-

mat layout and a collaborating environment, ideal for creative tenants.

The size of the space combined with the indoor and outdoor areas and the covered parking allows the hosting of large events and corporate gatherings.



Table of Contents

PROPERTY OVERVIEW	04
FLOOR PLANS	07
WYNWOOD	12
TEAM	27



Property Overview

Property
Specs.

	Indoor	Outdoor	Total
PARKING		46 Spaces	
GROUND FLOOR	13,966 SQFT	989 SQFT	14,955 SQFT
SECOND FLOOR	19,977 SQFT	1,195 SQFT	22,476 SQFT
ROOFTOP	6,019 SQFT	7,324 SQFT	13,343 SQFT
TOTAL	39,962 SQFT	9,508 SQFT	49,470 SQFT

Timeline

Q1 2024

Full Architectural Plans

Q4 2024

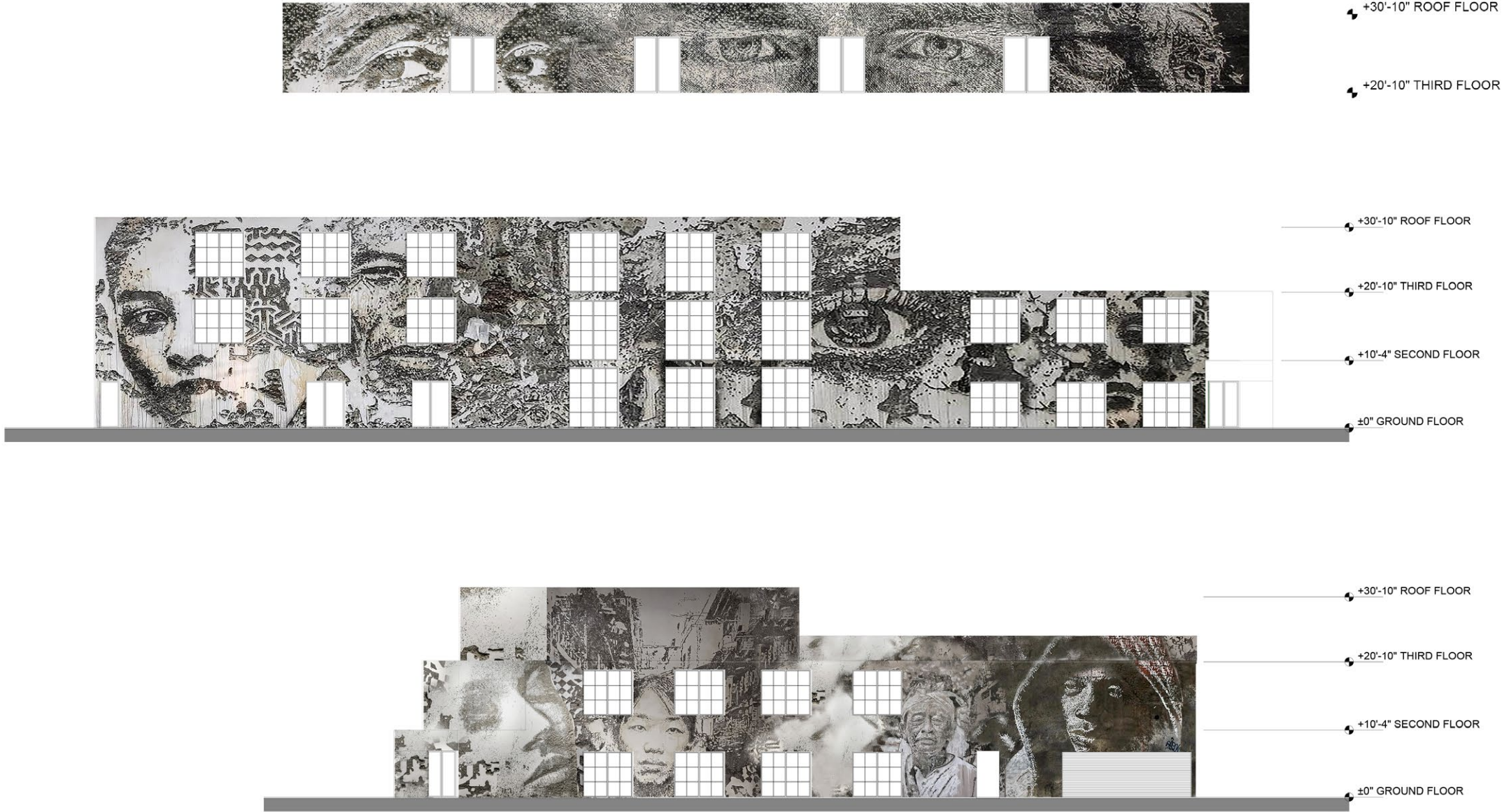
Permits and City Approvals

Q1 2025

Construction Start

Q2 2026

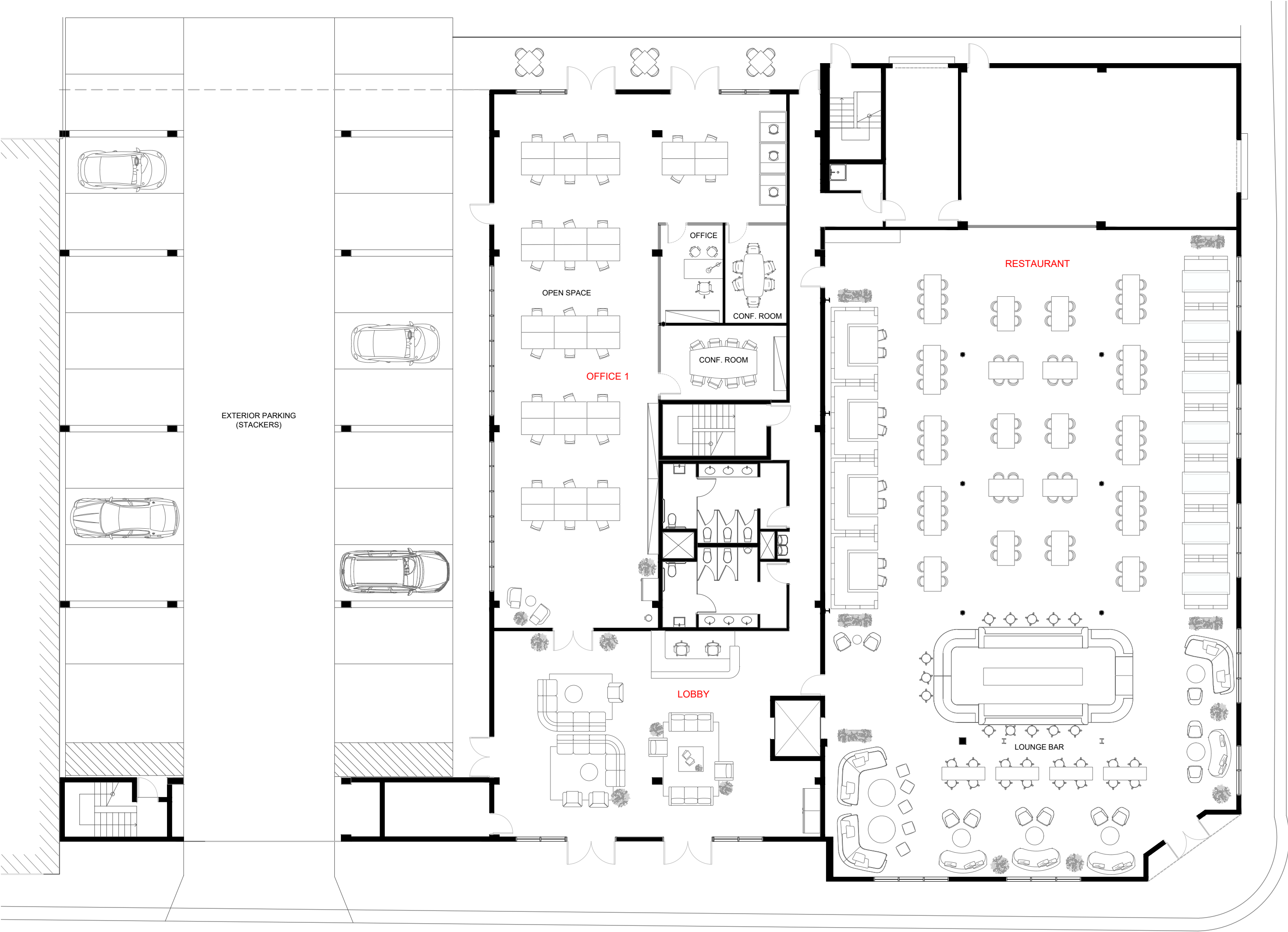
TCO and Delivery to Tenant



Floor Plans

Ground Floor
Total 14,955 SQFT

Restaurant:	7,781 SQFT
Office:	3,782 SQFT
Lobby:	2,403 SQFT
Outdoor:	989 SQFT
Parking:	46 PARKING SPACES



Second Floor
Total 22,476 SQFT

Office 2:	6,652 SQFT
Office 3:	7,220 SQFT
Office 4:	3,986 SQFT
Office 5:	3,423 SQFT
Terrace:	1,195 SQFT

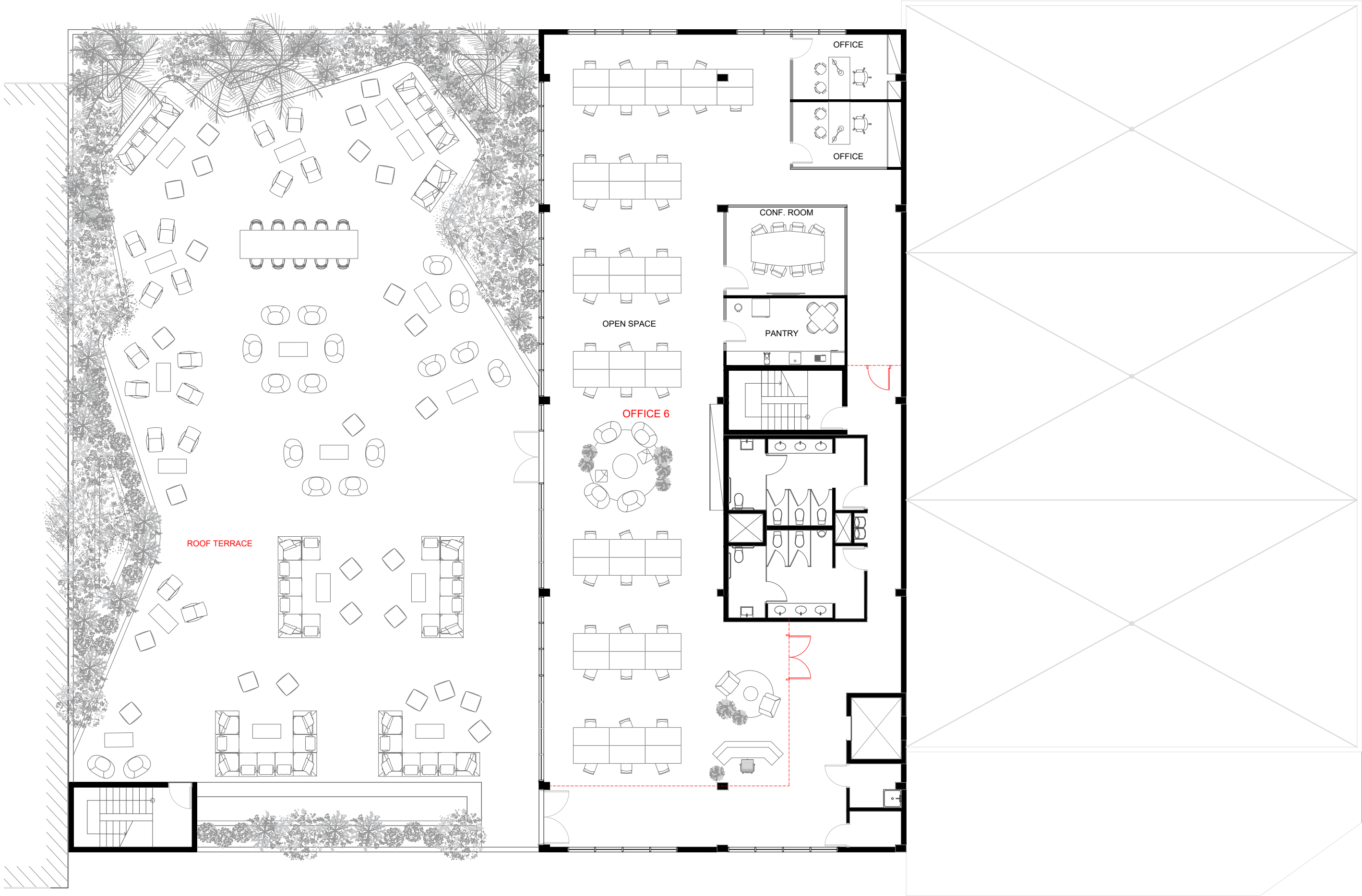


Rooftop

Total 13,343 SQFT

Office 6: 6,019 SQFT

Terrace: 7,324 SQFT





Wyncatcher II



Wyncatcher I

Wynwood

Overview

THE DISTRICT TODAY

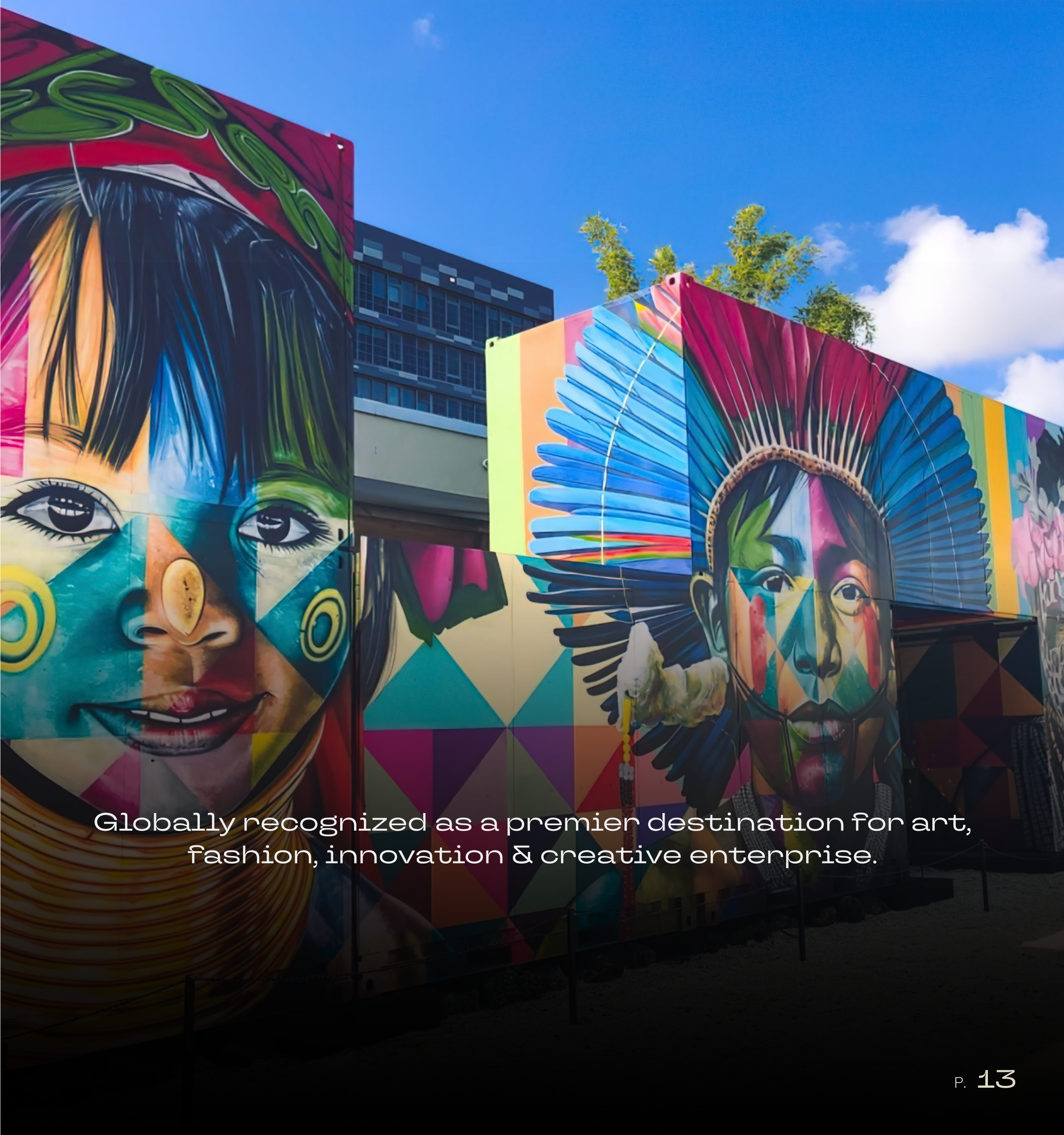
Today, Wynwood is the most important community of arts and creative businesses in the United States. With over 400+ businesses, 200+ street murals 30+ eateries, and encompassing over 50 city blocks.

400+
BUSINESSES

50
CITY BLOCKS

200+
STREET MURALS

50+
EATERIES



Globally recognized as a premier destination for art, fashion, innovation & creative enterprise.

On the horizon

Wynwood is currently undergoing an unprecedented transformation, with a pipeline of over 3,500 residential units, 400 hotel rooms, and 1M SF of office space, setting the stage to create the epitome of the live, work, play ecosystem. So far, this transformation has attracted world renowned tech and creative companies like Spotify, Wework, Founder's Fund, Livenation, as well as popular restaurants like Momosan, Uchi, Pastis, and national and international developers like Related, AMLI, Fifield, The Collective, PMG, Quadrum, and L&L, among others.





The long term vision

Wynwood is on a definitive path to become United States' foremost epicenter for technology and creative businesses, setting a global example for urban revitalization. The district continually announces new residential, hotel, and office projects each month, complemented by substantial infrastructure advancements earmarked for the area's growth.

Notable among these proposals are the Wynwood Streetscape Master Plan and the eagerly anticipated Brightline commuter station. The latter initiative aims to connect Wynwood not only with Downtown Miami but also Fort Lauderdale, West Palm Beach, and Orlando, promising an interconnected network that transcends traditional city boundaries.

Restaurant
Fabric

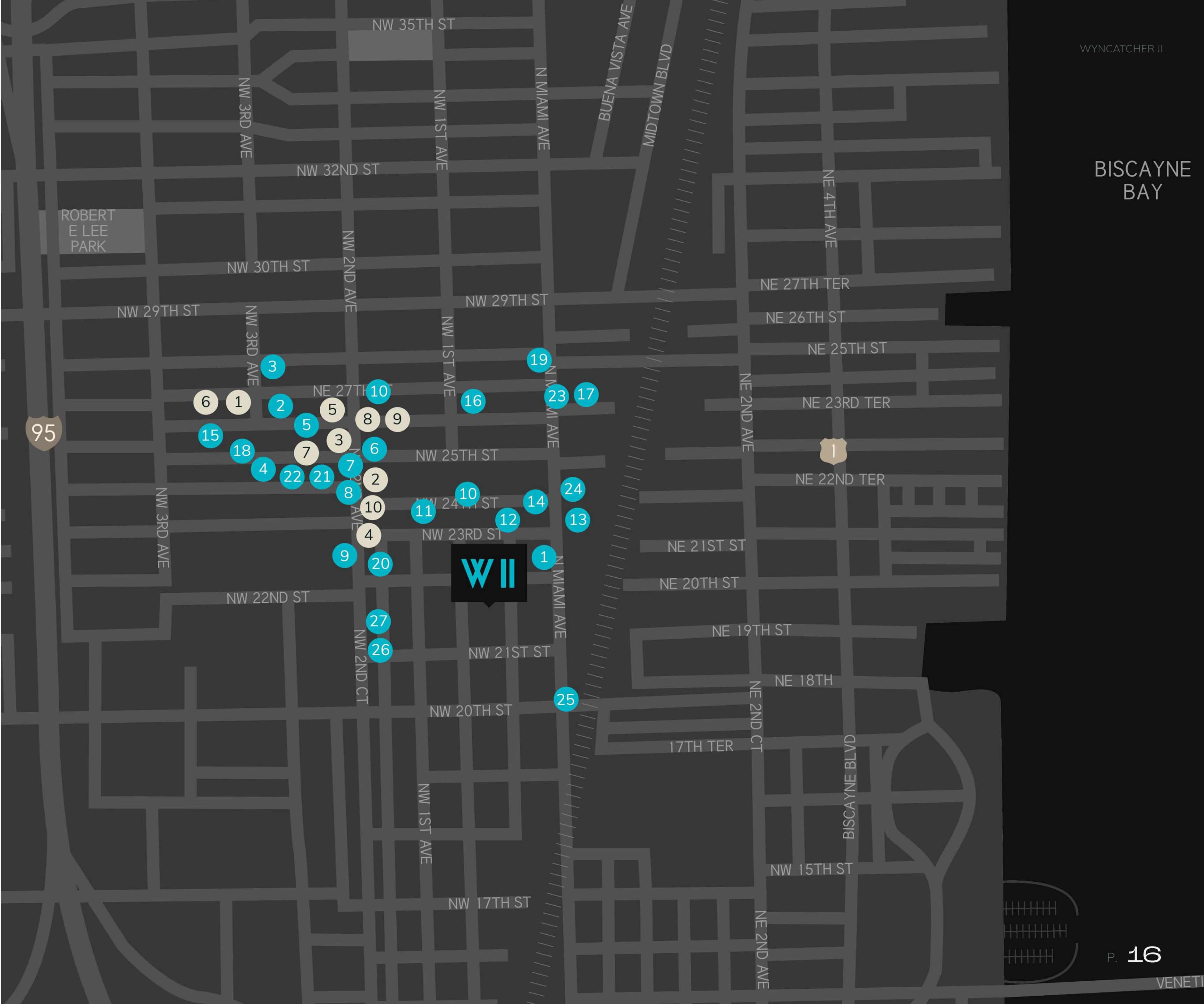
- 1. MARYGOLD'S FLORIDA
- 2. ZAK THE BAKER
- 3. CASA TUA CUCINA
- 4. BARTACO
- 5. UCHI
- 6. BODEGA
- 7. PANTHER COFFEE
- 8. COYO TACO
- 9. DR SMOOD
- 10. SWEET GREENS
- 11. 1-800 LUCKY
- 12. THE SALTY DONUT
- 13. MISTER 01
- 14. FABEL
- 15. PASTIS
- 16. WAYKU
- 17. DOMA
- 18. HIDEN
- 19. HIYAKAWA MIAMI
- 20. FREEHOLD MIAMI
- 21. KYU
- 22. LE CHICK
- 23. BEAKER & GREY
- 24. MISS CRISPY RICE
- 25. KUSH
- 26. ASTRA
- 27. OMAKAI

Retailers

- 1. WALT GRACE
- 2. SCOTCH & SODA
- 3. WARBY PARKER
- 4. ILLESTEVA
- 5. UNKNWN
- 6. BILLIONAIRE BOYS CLUB
- 7. MARINE LAYER
- 8. RAY-BAN
- 9. FOOT LOCKER
- 10. DJI

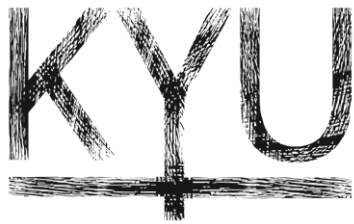
RESTAURANT

RETAILERS



Restaurant Fabric

Retailers



Residential

1. WYNWOOD 25
289 Units
2. SOCIETY
326 Units
3. AMLI
316 Units
4. DOMIO
175 Units
5. STRATA WYNWOOD
257 Units
6. PRH WYNWOOD
317 Units
7. WYNWOOD 27 & 2B
152 Units
8. WYNWOOD QUARTERS
200 Units
9. DIESEL
143 Units
10. THE DORSEY
306 Units
11. NOMAD
329 Units
12. FOYER
236 Unit
13. WYNWOOD GREEN
189 Units
14. THE COLLECTIVE
108 Units

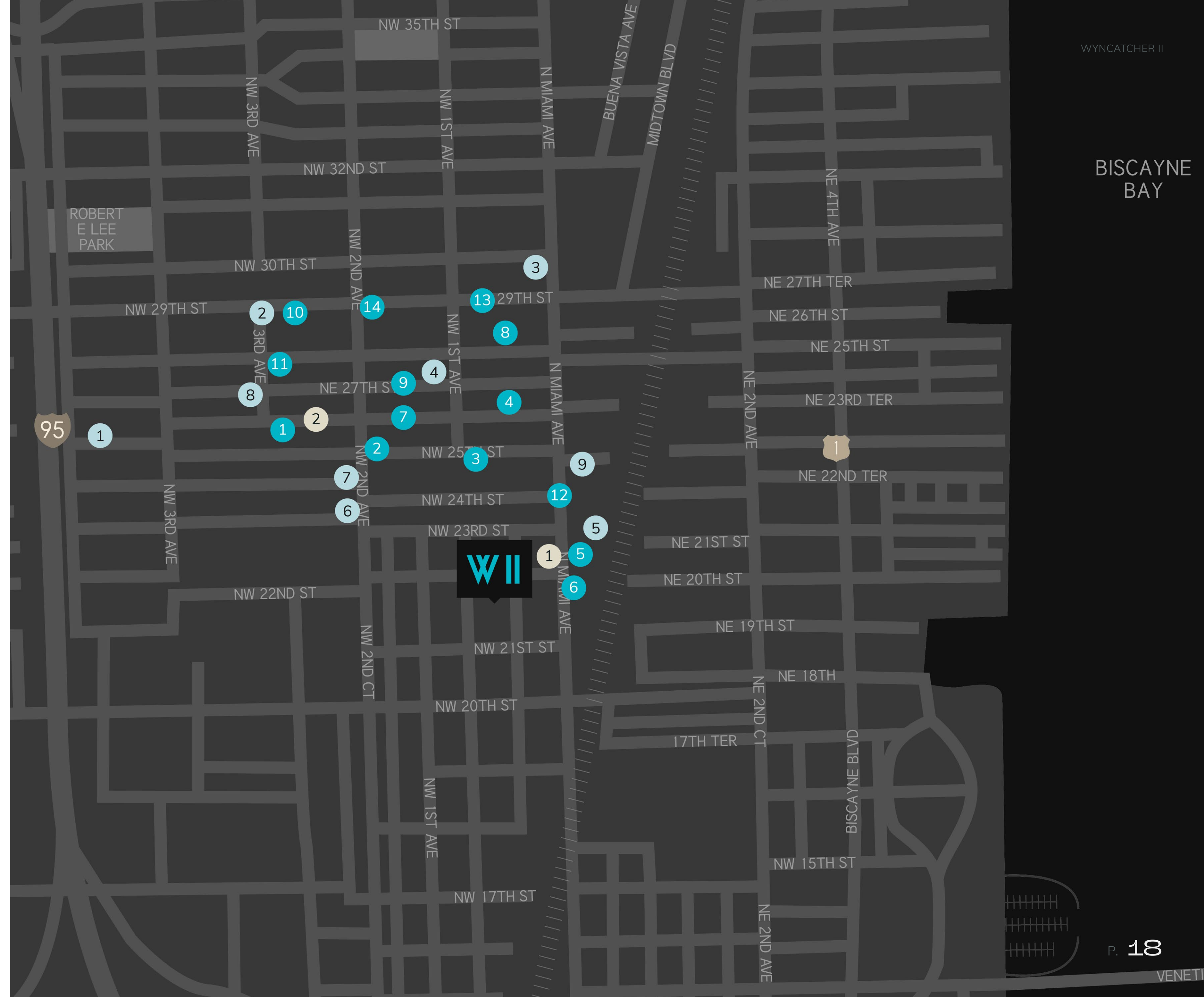
Hotels

1. ARLO
217 Rooms
2. MOXY
120 Rooms

Office

1. 545 WYN
300,000 SF
2. THE DORSEY
78,000 SF
3. GATEWAY
200,000 SF
4. WYNWOOD28
46,678 SF
5. STRATA
60,300 SF
6. CUBE
80,000 SF
7. ANNEX
60,000 SF
8. WYNWOOD BUILDING
45,000 SF
9. OASIS
20,000 SF

- RESIDENTIAL
- HOTELS
- OFFICE

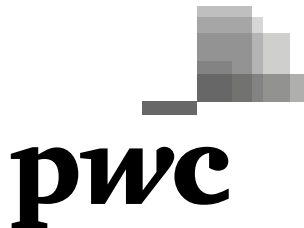


Residential

Tech & Creative Office



FOUNDERS FUND



Hotels



SONY MUSIC



RESIDENTIAL
3,005 Units



WYNWOOD 25
289 Units



FOYER
236 Units



DIESEL
143 Units



DOMIO
175 Units



WYNWOOD GREEN
189 Units



STRATA WYNWOOD
257 Units



THE DORSEY
306 Units



WYNWOOD QUARTERS
200 Units



WYNWOOD 27 & 28
152 Units



AMLI
316 Units



THE COLLECTIVE
108 Units



PRH WYNWOOD
317 Units



SOCIETY
326 Units

OFFICE
888,500 SF



545 WYN
300,000 SF



WYNWOOD BUILDING
45,000 SF



CUBE WYNWD
80,000 SF



GATEWAY AT WYNWOOD
200,000 SF



OASIS WYNWOOD
20,000 SF



THE ANNEX
60,000 SF

HOTELS
407 Rooms



MOXY
120 Rooms



ARLO
217 Rooms

A tech community gathering.

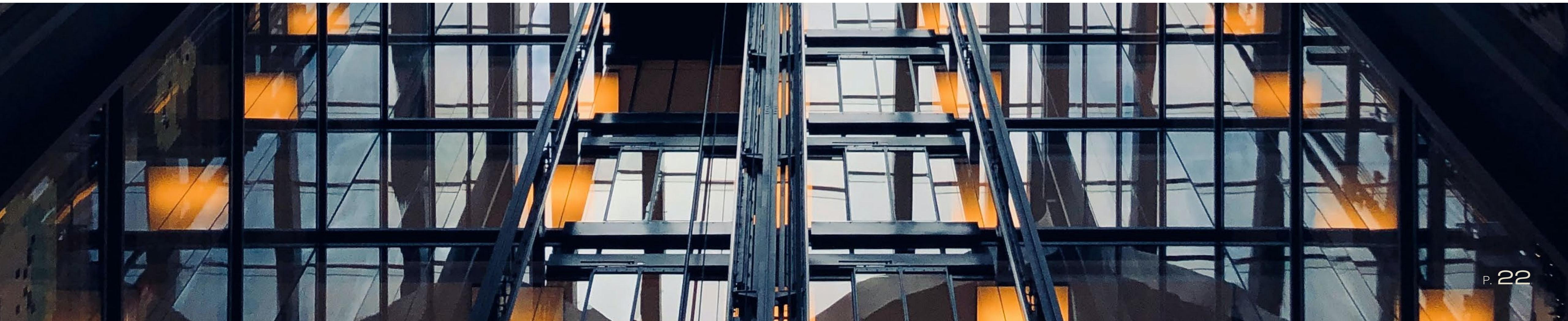
Wynwood is home to a growing number of established and emerging tech-based companies drawn to its world class street art murals, pedestrian-friendly streets, unique restaurants and entertainment concepts. Miami's tech sector was born in Wynwood over 10 years ago and remains home to Florida's first co-working facility, tech incubator and accelerator, The Lab Miami, as well as nationally recognized coding bootcamp BrainStation (formerly Wyncode Academy).



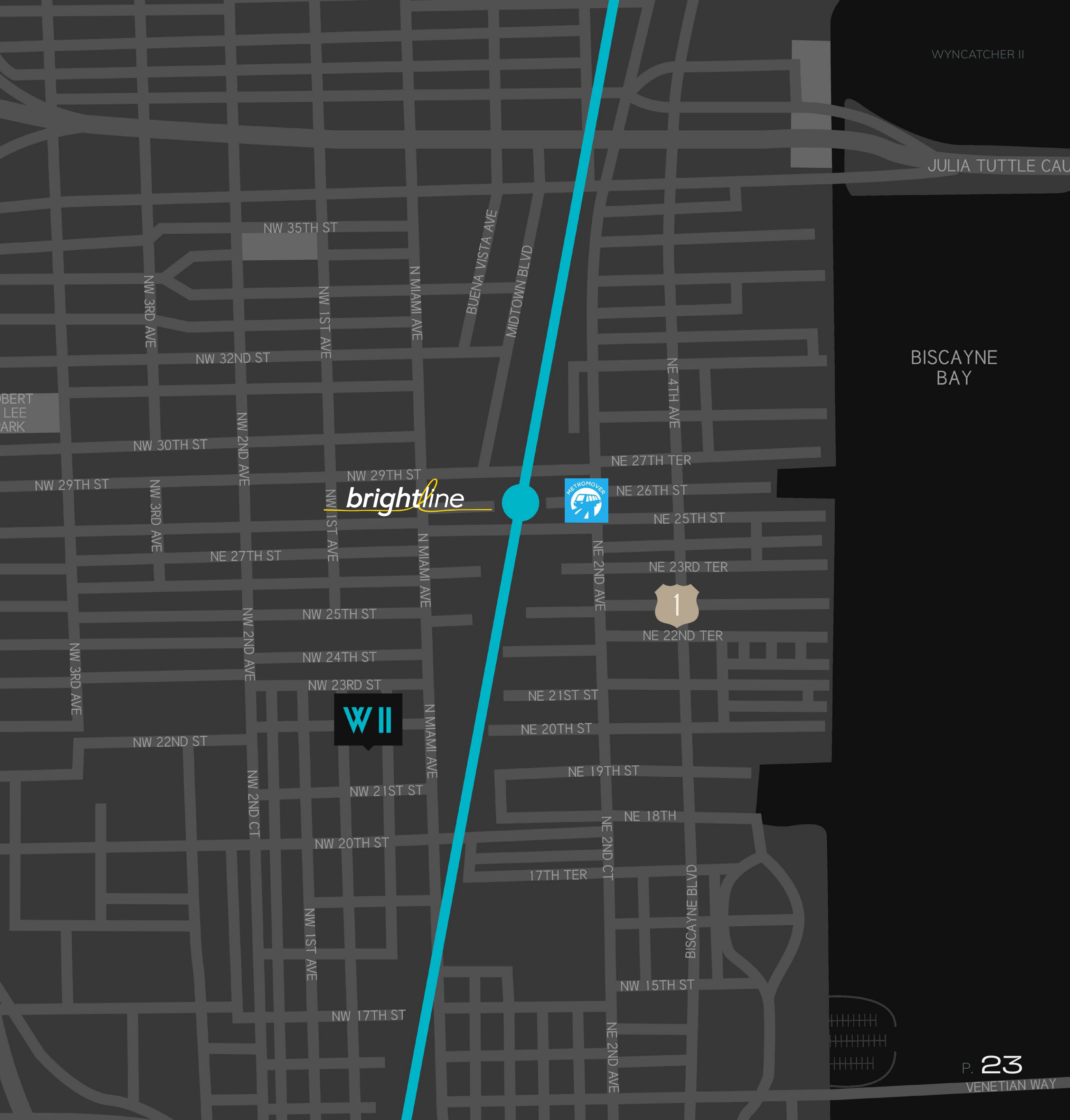
A new pedigree of tenants.

This year, Silicon Valley transplants such as Founders Fund, Atomic and OpenStore signed multiyear leases at the Wynwood Annex, a new Class A office tower developed by the Related Group. Stockholm-based streaming giant Spotify also chose Wynwood for its LATAM HQ.

Wynwood's vibrant environment and popularity with tech workers are factors that continue to lure tech firms from Silicon Valley as well as New York hedge funds to establish secondary HQs in the neighborhood. The office, retail and residential mix has resulted in a low-rise, campus-like environment for collaboration and networking unlike anything else in the United States.



Future Mobility & Pedestrian Experience.





The district today

Wynwood welcomes over 5 million annual visitors that are drawn to its eclectic mix of art, retail and entertainment venues. It's home to over 200 public street art murals, 400+ businesses and one of the most dynamic culinary markets in the country. Wynwood is widely recognized as one of the most walkable neighborhoods in America with a 94 Walk Score. It has very good access to public transportation (MetroBus & City Trolley), is bicycle friendly, and has dedicated rideshare pick-up and drop-off zones throughout its 50 city-blocks.

Future brightline Commuter rail service

Miami-Dade County is finalizing plans to establish new commuter rail service along the Florida East Coast railway that intersects across Wynwood a block east of North Miami Avenue. The new service is designed to interconnect Downtown Miami with new stations in Wynwood, Design District, North Miami and Aventura. The FEC railway is already being utilized by the high-speed Brightline train service that plans to connect Miami and Orlando from its MiamiCentral Station, which is just over one mile south of Wynwood.





Expansion of metromover network

Metromover, Miami's free, light-rail transit service, operates seven days a week and is planning to expand service along North Miami Avenue with proposed stops in Wynwood, Midtown and the Design District. The new service is expected to connect with existing stops at the Genting / Resorts World Miami Plaza, Perez Art Museum, FTX Arena (home to NBA's Miami Heat), Bayside Marketplace, Miami-Dade College and Miami International Airport.

Team



The Developer.

VALERIO MORABITO - MORABITO PROPERTIES

Design is everything to Morabito Properties. We use design to transform the way that people think about their properties, finding innovative and exciting ways to get things done. Driven by our passion, we strive to find the very best finishes and the very best solutions, whether it's through technology, materials, or interior design. We encourage vision and imagination at every stage. Through beautiful craftsmanship and elegant design, we don't simply build. We create lasting connections between our properties and our clients, fulfilling an emotional need rather than simply a material one.



The Developer.

VALERIO MORABITO - MORABITO PROPERTIES





The Artist.

VHILS - ALEXANDRE FARTO

Portuguese artist Alexandre Farto (b. 1987) has been interacting visually with the urban environment under the name of Vhils since his days as a prolific graffiti writer in the early-to-mid 2000s.

This striking form of visual poetry, showcased around the world in both indoor and outdoor settings, has been described as brutal and complex, yet imbued with a simplicity that speaks to the core of human emotions.

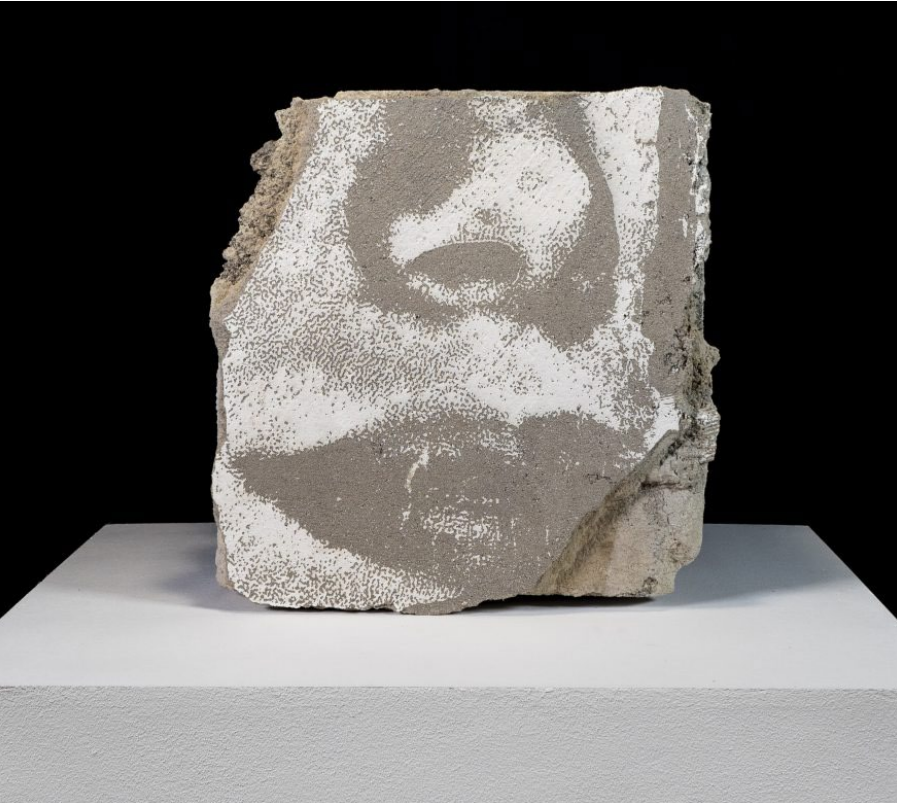
An ongoing reflection on identity, on life in contemporary urban societies and their saturated environments, it explores themes such as the struggle between the aspirations of the individual and the demands of everyday life, or the erosion of cultural uniqueness in the face of the dominant model of globalised development and the increasingly uniform reality it has been imposing around the world. It speaks of effacement but also of resistance, of destruction yet also of beauty in this overwhelming setting, exploring the connections and contrasts, similar-

ities and differences, between global and local realities. Since 2005, he has presented his work in over 30 countries around the world in solo and group exhibitions, site-specific art interventions, artistic events and projects in various contexts – from working with communities in the favelas of Rio de Janeiro, to collaborations with reputed art institutions such as the EDP Foundation (Lisbon), Centre Pompidou (Paris), Barbican Centre (London), CAFA Art Museum (Beijing), or the Museum of Contemporary Art San Diego (San Diego), among others. An avid experimentalist, Vhils has been developing his personal aesthetics in a plurality of media besides his signature carving technique: from stencil painting to metal etching, from pyrotechnic explosions and video to sculptural installations. He has also directed several music videos, short films, and one stage production. His unique approach and artwork have been garnering critical acclaim around the globe.



The Artist.

VHILS - ALEXANDRE FARTO





Architect.

VAGABONDARQ

VagabondArq team considers architecture not as a single practice but as several interlocking ones. Each project they undertake is approached with a deep respect for its contextual relevance. Their design principles are not centered around any specific aesthetic movement; rather, they are anchored in the aspiration to enhance the quality of human life and promote environmental sustainability.

Their commitment lies in fostering honesty and clarity. Their primary task is to thoroughly comprehend the client's vision and requirements, prioritizing the client's objectives over their own. They place great importance on direct communication and occasionally prefer in-person meetings, often sharing a drink or a meal to facilitate meaningful exchanges.

Throughout their years in the industry, they have been fortunate to collaborate with excep-

tional clients on a variety of outstanding projects. They recognize that a building exists within the continuum of time, and its enduring value is intimately linked to its ongoing performance. VagabondArq team take pride in their identity as women in a predominantly male-dominated industry, with only 17% of architects being female and 83% male. They aspire to serve as inspirational figures, encouraging more women to pursue careers in architecture.

Additionally, as Latinas, they represent an even smaller demographic, accounting for less than 5% of licensed architects, and they boast proficiency in both English and Spanish, enabling them to bridge cultural and linguistic divides in their work.



Architect.
VAGABONDARQ





Landscape Architect.

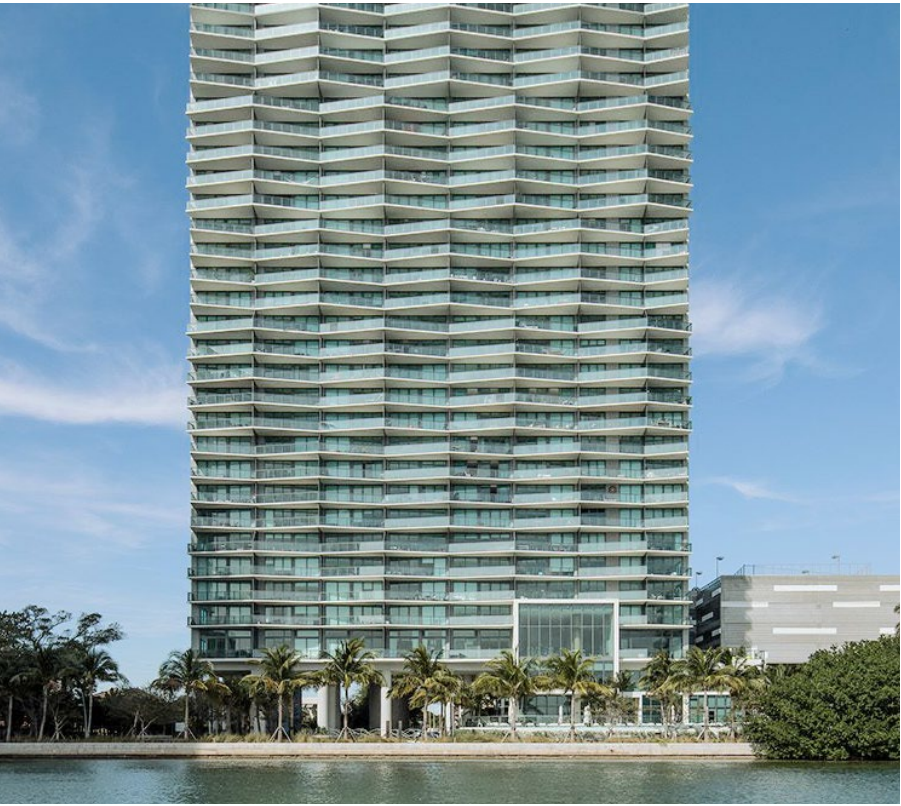
ARQUITECTONICA GEO

With offices in Miami, New York, Los Angeles, Paris, Hong Kong, Shanghai, Manila, Lima and Sao Paulo, Arquitectonica is a major presence on the international stage. From its inception in 1977, the firm received almost instant attention and acclaim from critics and the public alike, due to a bold modernism that was immediately identified with a renaissance in Miami's urban landscape. Led by Principals Bernardo Fort- Brescia and Laurinda Spear, Arquitectonica continues to push the limits of design with its innovative use of materials, geometry, pattern and color to introduce a new brand of humanistic modern design to the world. Arquitectonica focuses on ecologically sensitive, yet commercially viable design and is widely

recognized for its ability to create unique forms of memorable imagery in close harmony with the environment. The firm explores the complex challenges of contemporary built and natural environments, developing solutions that balance a modern aesthetic with an environmentally sensitive practice to create value, identity and a sustainable environment. Arquitectonica's philosophy is based on the principle of preserving a location's geographic character – the entire combination of natural and human attributes that make one place distinct from another – an authentic design process that preserves the ecological and cultural environment.



Landscape Architect.
ARQUITECTONICA GEO



WYNCATCHER II

2150 NW MIAMI CT
WYNWOOD

info@wyncatcherll.com

www.wyncatcherll.com